



University of
Pittsburgh



**THE CITY IS
OUR CAMPUS.**

FUTURE THINKING AT PITT



A Prestigious Education

At Pitt, you can find everything you want to build an exceptional life and future. With a 14:1 student-to-faculty ratio, students study and research with professors who are reputable leaders in their field.

Pitt is one of the top-ranked institutions in the world for research and innovation. Our urban location opens up many opportunities for internships and research, and our park-like campus is the perfect place to study and relax.

If you can dream it, Pitt will help you do it.

Pitt provides students from all around the world the freedom to pursue their passions and the necessary resources to foster greater understanding, opening doors to countless opportunities. Our university has gained global recognition as a hub of innovation, acknowledged by corporations and organizations worldwide. Moreover, our respectable network of alums, known for their remarkable achievements, serves as a well-established and well-connected link between academic life and professional success.



100+

**MAJORS, MINORS,
AND CERTIFICATES**



600+

**STUDENT
ORGANIZATIONS**



14:1
ratio

**STUDENT-TO-
FACULTY RATIO**

IMAGINATION IN MOTION



Discover a world of learning and growth beyond our expansive urban campus. At our university, we empower our students to explore real-life experiences and internships, encouraging them to spread their wings. The Outside the Classroom Curriculum (OCC) at Pitt plays a pivotal role in honing their leadership skills, fostering community engagement, and providing structured experiential opportunities.

Through OCC, our students begin making a meaningful impact on both their community and the wider world, guided by our dedicated faculty.



94% of Pitt alums

are employed or in graduate school
within 6 months of graduation



International Student Organizations

You can get connected to the campus community through Global Ties, a program that builds community with domestic and international students through cultural programs, a mentorship program, a student-led International Outreach Committee, and more.

globalties.pitt.edu

Housing

On-campus housing is not mandatory but is guaranteed for three years to first-year students who pay their enrollment and housing deposits by the assigned deadlines. Pitt offers 18+ residence halls with amenities and the option to live in a Living Learning Community.

pc.pitt.edu

Office of International Services (OIS)

The Office of International Services is your immigration expert on campus. They handle student immigration matters quickly and correctly to ensure a smooth beginning to college life. They also provide social and cultural programming to help you adjust to life in the United States and experience American culture.

ois.pitt.edu

Pitt Career Center

Pitt Career Center guarantees an experiential learning opportunity to anyone who participates in their Internship Prep Program. Pitt students have landed internships at places like the Andy Warhol Museum, the Pittsburgh Penguins, U.S. Steel, and Western Psychiatric Institute and Clinic. They will also work with you to make a plan for graduate school applications.

careers.pitt.edu



A New Home for Recreation!

Pitt is bringing the future to you: From recreation and fitness areas to yoga and meditation spaces, this innovative multi-story facility will encompass all aspects of health and wellness, taking a holistic approach to support and enrich your experience. The Center, estimated at 270,000 sq. feet, will include additional amenities, such as a recreation pool, jogging track, weight-lifting equipment, basketball and volleyball courts, and more. This space is currently projected to be completed in the Fall of 2024!

reccenter.pitt.edu

PART OF SOMETHING BIG

You can definitely find larger universities than Pitt. But you'll be hard-pressed to find any campus where ideas reach such an epic scale. They are fueled by passionate faculty who embrace their multi-faceted role of educator, mentor, cheerleader, and confidant.



TOP 50

Most Innovative
Universities in the World



Taking the Classroom to the Community

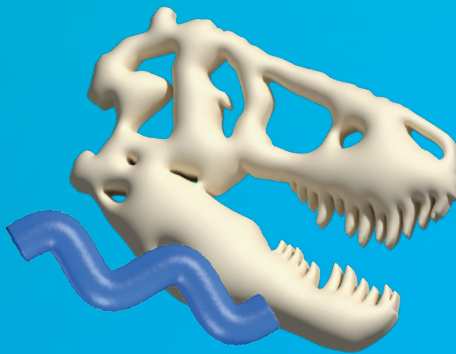


"Pitt emphasizes the importance of taking what you're learning in the classroom and emphasizing how it's going to impact the community, how you're going to make the world a better place. And that's what I looked for in the university I was going to go to. The reason I Hail to Pitt touches on what Pitt has to offer and what Pitt prides itself on: the emphasis on intellectual curiosity and community engagement."

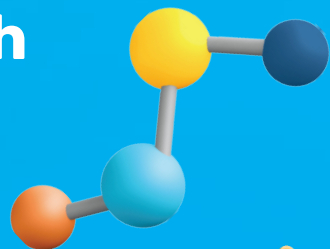
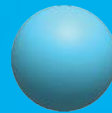
- Rushil Ramprasad, Finance and Chemistry majors

RANK 19

Top Public University
in the Nation



"One of the best
global research
institutions"



PITTSBURGH

ONE OF THE MOST LIVABLE CITIES IN THE U.S.



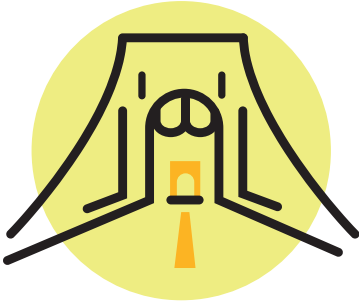
Our students truly enjoy the best of both worlds: a charming tree-lined campus community in one of the most vibrant sections of what U.S. News and World Report called “One of the best cities to live.” Pittsburgh’s booming tech and medical industry has made “The Burgh” a magnet for young talent and start-up entrepreneurs. Meanwhile, the rich cultural tradition and diverse culinary scene provide students with almost never-ending opportunities to explore their interests and appetites alike.

- Four seasons with average temperatures ranging from -2° to 23° C.
- Home to three professional sports teams: Steelers (National Football League), Pirates (Major League Baseball), and Penguins (National Hockey League).
- Host to the headquarters for world-class corporations specializing in financial services, advanced manufacturing, and healthcare.
- Many museums, galleries, performing arts venues, and cultural institutions call Pittsburgh home.
- Easy access to the Pittsburgh International Airport via public transportation (which is fare-free with a valid Pitt student ID).



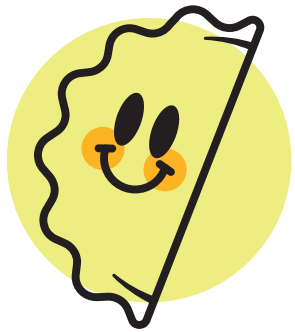
Pop in for Art.

The world-renowned Andy Warhol Museum and many other cultural venues are convenient and free with your Pitt student ID (a.k.a. The Panther Card). It allows students to travel fare-free on public transportation through each of Pittsburgh's 90 diverse neighborhoods.



The Pens. The Point. The Paddleboards.

Pittsburgh used to be America's best-kept secret city. But now the word's out. People flock to our legendary sports teams, partake in our nightlife, and find adventure in our many trails and waterways. The music scene pulses with homegrown bands and a steady rhythm of national artists.



Yinz hungry?

Allow us to translate: "By chance have you had the opportunity to partake in our outstanding Pittsburgh cuisine?" The food scene in Pittsburgh has exploded in the past decade. Top chefs from New York and Europe have discovered that our region's agriculture, relatively low cost of living, and eclectic neighborhoods were the perfect ingredients to push the culinary envelope.

Where is Pitt?

The University of Pittsburgh is located in the city of Pittsburgh, Pennsylvania. Pittsburgh is a vibrant and welcoming city with a diverse culture and history. It is easy to find cuisine from all over the world! With rapidly growing corporations, non-profits, and startups all over the city, there are plenty of places to put your training to work with career-building internships and other experiential learning opportunities. Pitt also offers three regional campuses in Western Pennsylvania in Bradford, Greensburg and Johnstown.



THE EDUCATIONAL VALUE OF A LIFETIME

Making the Pitt experience obtainable for all students is one of our top priorities. As students and their families navigate college options, the Office of Admissions and Financial Aid is here to help! We're committed to helping you understand your financial options. What's more, a Pitt education proves its worth through means beyond monetary considerations. We want to ensure you are ready to fully invest your intellect and character to embrace its rewards.

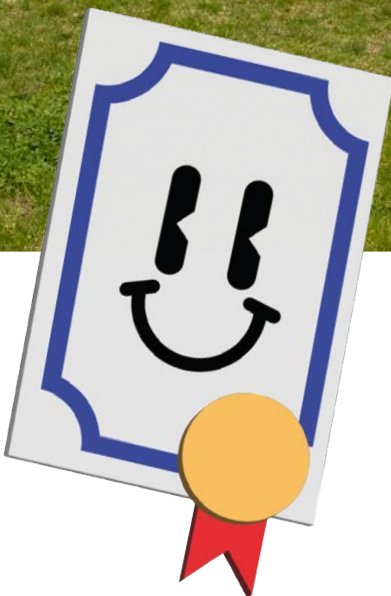


Step one: apply now

Early application to Pitt (**completed by February 1**) puts you in consideration for first-year merit-based scholarships.

International Scholarships

The University of Pittsburgh offers limited merit-based scholarships in the amount of \$2,000 USD per year to international first-year students. Scholarships are renewable for four years as long as the recipient maintains satisfactory academic progress and meets all other terms and conditions set out in the award. Complete your application **by February 1** to automatically be reviewed for this award, no separate application needed. Admitted students can also search Pitt's scholarship database, PittFund\$Me, for additional opportunities.





1

Pick a School

Kenneth P. Dietrich School of Arts and Sciences • College of Business Administration
School of Computing and Information • Swanson School of Engineering • School of
Nursing • School of Public Health



2

Pick a Field of Study

100+ Majors, Minors, and certificates

DIETRICH SCHOOL OF ARTS AND SCIENCES

MAJORS

Actuarial Mathematics
Africana Studies
Africana Studies/English
Anthropology
Architecture
Architectural Studies
Arts and Sciences/Engineering Joint Degree
Astronomy
Biochemistry
Biological Sciences
Chemistry
Chinese
Classics
Communication
Computational Biology/Computing and
Information Joint Degree
Computational Social Science/Computing and
Information Joint Degree
Data Science/Computing and Information Joint
Degree
Digital Narrative and Interactive Design/Computing
and Information Joint Degree
Ecology and Evolution
Economics

Economics/Statistics
English Literature
English Writing
Environmental Science
Environmental Studies
Film and Media Studies
French
Gender, Sexuality, and Women's Studies
Geology
German
History
History and Philosophy of Science
History of Art and Architecture
International and Area Studies BPhil
International Studies Co-major
Italian
Italian Studies
Japanese
Law, Criminal Justice, and Society
Linguistics
Mathematical Biology
Mathematics
Mathematics, Applied
Mathematics/Economics

Microbiology
Molecular Biology
Museum Studies
Music
Neuroscience
Philosophy
Physics
Physics and Astronomy
Physics and Quantum Computing/Computing and
Information Joint Degree
Political Science
Politics and Philosophy
Psychology
Public and Professional Writing
Religious Studies
Russian
Sociology
Spanish
Statistics
Studio Arts
Theatre Arts
Undecided
Urban Studies
Urban Planning and Geographic Analysis

TRACKS

Pre-Dental Medicine
Pre-Law

Pre-Medicine

Pre-Pharmacy

MINORS

Africana Studies
Ancient Greek
Applied Statistics
Architecture Design
Bosnian, Croatian, Montenegrin and Serbian
Chemistry
Chinese
Chinese Heritage
Classical Civilization
Creative Writing
Economics
English Literature
Film and Media Studies
French
Gender, Sexuality, and Women's Studies
German
Hindi

Hispanic Language and Culture
History
Historic Preservation
Hungarian
Irish
Italian
Japanese
Korean
Latin
LGBTQ and Critical Sexuality Studies
Linguistics
Mathematics
Mediterranean Art & Archaeology
Modern Greek
Music
Museum Studies
Neuroscience

Persian/Farsi
Philosophy
Physics
Polish
Political Science
Portuguese and Luso-Brazilian Culture
Quechua
Religious Studies
Slovak Studies
Sociology
Spanish
Studio Arts
Swahili
Swedish
Theatre Arts
Turkish
Vietnamese

CERTIFICATES

Afro-Latin American and Afro-Latinx Studies
American Sign Language
Arabic Language and Linguistics
Children's Literature
Civil Engineering for Architecture Majors
Conceptual Foundations of Medicine
Digital Studies and Methods

Geographic Information Systems
German Language
Health Humanities
Jewish Studies
Medieval and Renaissance Studies
Nanoscience and Engineering
Photonics

Public Communication of Science & Technology
Public and Professional Writing
Quantum Computing and Quantum Information
Sport Studies
Sustainability
Television and Broadcast Arts

COLLEGE OF BUSINESS ADMINISTRATION

MAJORS

Accounting
Business Information Systems
Finance
Global Management
Human Resources Management
Marketing
Supply Chain Management

CERTIFICATES

Business Analytics
Innovation and Entrepreneurship
International Business
Leadership and Ethics
Sports Management
Supply Chain Management

MINOR

Business (for students enrolled
in other undergraduate schools)

SCHOOL OF COMPUTING AND INFORMATION

MAJORS

Computer Science
Computational Biology/Arts and Sciences
Joint Degree
Data Science
Digital Narrative and Interactive Design/Arts
and Sciences Joint Degree
Information Science

MINOR

Computer Science

SCHOOL OF NURSING

MAJOR

Nursing

SCHOOL OF PUBLIC HEALTH

MAJOR

Public Health

SWANSON SCHOOL OF ENGINEERING

MAJORS

Bioengineering
Chemical Engineering
Civil Engineering
Computer Engineering
Electrical Engineering
Engineering Science
Environmental Engineering
Industrial Engineering
Materials Science and Engineering
Mechanical Engineering

MINORS

Bioengineering
Chemical Engineering
Civil Engineering
Computer Engineering
Electrical Engineering
Engineering Science
Environmental Engineering
Industrial Engineering
Materials Science and Engineering
Mechanical Engineering
Petroleum Engineering
Polymer Engineering

CERTIFICATES

Engineering Data Analytics
Engineering for Humanity
Engineering Simulation in Design
Health Systems Engineering
Innovation, Product Design, and Entrepreneurship
International Engineering
Nanoscience and Engineering
Nuclear Engineering
Supply Chain Management
Sustainable Engineering

UNIVERSITY CENTER FOR INTERNATIONAL STUDIES

CERTIFICATES

African Studies
Asian Studies
European Union Studies
Global Studies

Latin American Studies
Russian/East European Studies
Transatlantic Studies
West European Studies

RELATED CONCENTRATION

European and Eurasian Studies

Upper-level division schools

You need to complete required prerequisites in the Dietrich School before transferring into any of these programs.

COLLEGE OF GENERAL STUDIES

MAJORS

Administration of Justice
Business and Health Services Double Degree
Health Services
Law, Criminal Justice, and Society
Legal Studies
Liberal Studies
Media and Professional Communications
Natural Sciences
Public Service

MINORS

Law, Criminal Justice, & Society
Public Service

CERTIFICATES

Accounting
Communication
Community Health Assessment
Corporate/Community Relations
Digital Media
Disability Studies
Gender, Sexuality, and Women's Studies
Information System Design
Leadership
Managing Health Services Programs and Projects
National Preparedness and Homeland Security
Nonprofit Management
Writing
Writing for the Professions

SCHOOL OF EDUCATION

MAJORS

Applied Developmental Psychology
Health and Physical Activity
Teacher Education

MINORS

Applied Fitness
Aquatics
Dance
Exercise Science
Teacher Education

SCHOOL OF HEALTH AND REHABILITATION SCIENCES

MAJORS

Communication Science
Emergency Medicine
Health Informatics
Nutrition Science
Rehabilitation Science

Accelerated MS Programs

Athletic Training
Dietitian Nutritionist Program

TRACKS

Pre-Audiology
Pre-Counseling
Pre-Health Informatics
Pre-Nutrition and Dietetics
Pre-Occupational Therapy
Pre-Physical Therapy
Pre-Physician Assistant Studies
Pre-Prosthetics and Orthotics
Pre-Rehabilitation Technology
Pre-Speech-Language Pathology
Pre-Sports Medicine
Pre-Sports Science

CERTIFICATES

Assistive Technology in Rehabilitation
Pathokinesiology in Rehabilitation
Psycho-Social Issues in Rehabilitation
and Personal Care

SCHOOL OF PHARMACY

MAJOR

Pharmacy (PharmD)

SCHOOL OF SOCIAL WORK

MAJOR

Social Work

MINOR

Social Work (for students enrolled
in other undergraduate schools)



Applying to Pitt

In order to apply to the University of Pittsburgh, make sure you fulfill these requirements!

- Complete your application by April 1 for the fall term or October 1 for the spring term.
- Fill out the online application at admissions.pitt.edu or using the Common App.
- Submit your response to the short answer question or the Common App essay.
- Submit an official high school transcript equivalent to U.S. grades 9-12, or enter your high school academic information using the Self-Reported Academic Record (SRAR). The SRAR is not required for international applicants.
- SAT or ACT results (Test optional through Fall 2025).
- Official TOEFL, IELTS, or Duolingo scores.
- Record of any university credits taken.
- \$55 application fee (USD)

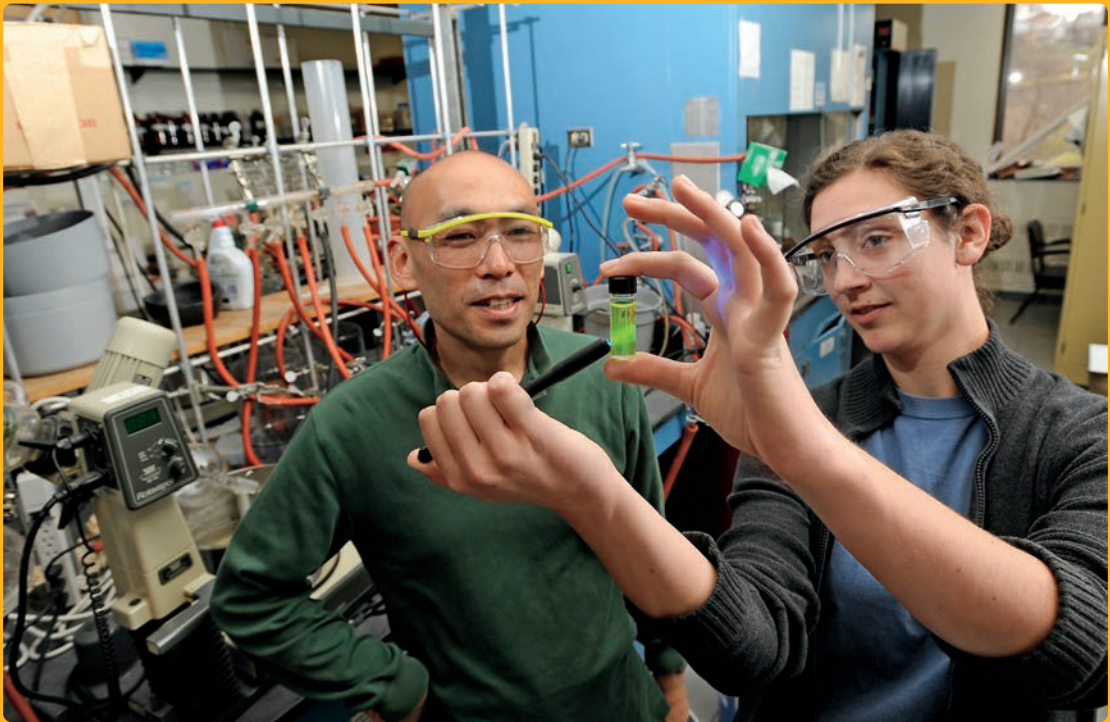
upitt.me/intl



45 Countries
48 States and Territories
1,653 High Schools

93%
of Pitt students return
after their first year
(National average is 83%)

For specific, systemwide enrollment figures, refer to the Office of Institutional Research: ir.pitt.edu



BE SEEN. BE HEARD. BE YOU.



University of Pittsburgh Admissions and Financial Aid

Transfer Welcome Center
130 Thackeray Hall
139 University Place
Pittsburgh, PA 15260-6601

admissions.pitt.edu
pitt.admissions@pitt.edu

Financial Aid Wellness Center
130 Thackeray Hall
139 University Place
Pittsburgh, PA 15260-6601

financialaid.pitt.edu
fnaid@pitt.edu

412.624.PITT (7488)



Nondiscrimination Policy Statement

The University of Pittsburgh, as an educational institution and as an employer, values equality of opportunity, human dignity, and racial/ethnic and cultural diversity. Accordingly, as fully explained in Policy 07-01-03, the University prohibits and will not engage in discrimination or harassment on the basis of race, color, religion, national origin, ancestry, sex, age, marital status, familial status, sexual orientation, gender identity and expression, genetic information, disability, or status as a veteran. The University also prohibits and will not engage in retaliation against any person who makes a claim of discrimination or harassment or who provides information in such an investigation. Further, the University will continue to take affirmative steps to support and advance these values consistent with the University's mission. This policy applies to admissions, employment, access to and treatment in University programs and activities. This is a commitment made by the University and is in accordance with federal, state, and/or local laws and regulations.

For information on University equal opportunity and affirmative action programs, please contact: University of Pittsburgh, Office of Affirmative Action, Diversity and Inclusion, Pamela W. Connolly, Associate Vice Chancellor, 500 Craig Hall, Pittsburgh, PA 15260 (412) 648-7860.

For complete details on the University's Nondiscrimination Policy, please refer to Policy 07-01-03. For information on how to file a complaint under this policy, please refer to Procedure 07-01-03.

Equity in Athletics Disclosure Act Notice

Students and prospective students have the right to review the University's most recent report prepared pursuant to the Federal Equity in Athletics Disclosure Act, 20 U.S.C. & 1092. The report is available in Hillman Library. Inquiries may be made at the Reference/Information Desk.

Safety and Security Brochure

As mandated by federal and state law, the University of Pittsburgh has published a brochure that describes safety and security policies, procedures, and programs, as well as campus crime statistics for the past three years. If you would like a copy, please write to:

Campus Safety Information
c/o Mailing Services
University of Pittsburgh
400 N. Lexington Avenue
Pittsburgh, PA 15260

Or, you can check the University of Pittsburgh's most recent For Safety's Sake information at: safety.pitt.edu

The provisions of this document are subject to change at any time at the University's sole discretion. This document is intended to serve only as a general source of information about the University and is no way intended to state contractual terms.



Scan this code to learn more about Pitt! Keep this brochure and rescan the code throughout the year. We'll be changing where this leads and adding surprises for you to explore!